

# JLT VALUATIONS

## PUBLIC SECTOR VALUATIONS



Jardine Lloyd Thompson is pleased to introduce their new service JLT Valuations.

This specialist division has been formed to offer Public Sector entities access to top valuation professionals who can assist with your tangible asset valuation requirements while understanding your business needs.

### JLT VALUATIONS

- Consists of a team of experienced and qualified valuers all of whom are Members of the Property Institute of New Zealand;
- Provide valuations of property, plant, equipment, contents, infrastructure, fine art and infrastructure assets;
- Specialise in financial reporting and insurance valuations;
- Undertake valuations in metropolitan and regional areas nationwide;
- Have experience in undertaking valuations for numerous varying Public Sector entities;
- Are price competitive;
- Undertake valuations of thousands of properties annually.

### BENEFITS OF JLT VALUATION SERVICES

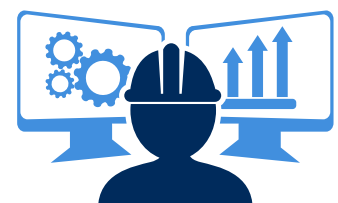
#### Consultative Approach

- JLT Valuations believes in a consultative approach;
- We look to become a valuation partner with our client rather than a transactional service providing further benefit to our clients;
- Our service involves discussions regarding the valuation findings and details/analysis on how these were achieved.



#### Qualified and Experienced Professionals

- All valuation staff are Our valuers are Members of the Property Institute of New Zealand;
- Our valuation team is formed of some of the top professionals in their field including specialist Property, Infrastructure, Fine Art and Plant & Equipment valuers;
- Our valuation team has spent their careers focused specifically on financial reporting and insurance valuations.





## Tailored Valuation Report

- JLT Valuations reports have been created in conjunction and consultation with insurance underwriters and brokers ensuring the most relevant and informative valuation output;
- Our valuation reports will meet the rigor of internal and external audit;
- Each building that is inspected has an individual summary sheet detailing construction materials, size and values.

## Understanding of the Impact of Insurance Valuations

- Being part of JLT, we understand not only valuations but insurance also. JLT Valuation Services has unrivaled access to insurance professionals which ensures our valuations are entirely relevant to our clients insurance policies;
- Having the link to insurance brokers allows for our products to be tailored to each individual client/members requirement.

## Completion of Insurance Schedule

- As part of our insurance valuation service, JLT Valuation Services completes and maintains many of our clients Material Damage Schedules. This ensures accuracy, consistency and completeness of the schedule annually;
- Undertaking this service provides a soft cost saving to the Councils as they would not need to complete this internally saving staff time.

## Desk Top Valuation Updates

- We work on a multi year service in which an asset is physically inspected in the first year then updated from the desk for the subsequent two to four years;
- The updated values take into account inflation/deflation, changes to asset portfolios and impacts to specific assets;
- As per above, updated values are entered into our clients Material Damage Schedule annually.



If you would like further information or to speak to one of our valuation professionals, please do not hesitate contacting:

## CONTACT

DEBORAH FISHER  
Client Relationship  
Manager

T: +64 9 300 3763  
M: +64 21 902 864  
Deborah.Fisher@jlt.co.nz

SIMON O'BRIEN  
Head of Valuation Services  
Australasia

T: +61 2 9290 8038  
M: +61 417 079204  
Simon.O'Brien@jlt.com.au

Any advice contained within this brochure is general advice & does not take into account your objectives, financial situation or needs. You should consider the relevant Product Disclosure Statement & your objectives, financial situation or needs before acting on this advice. Please contact JLT for the relevant Product Disclosure Statement, or for further information. Published by JLT & no part of this document may be reproduced without permission from JLT.

Jardine Lloyd Thompson Pty Ltd. ABN 69 009 098 864. AFS Licence 226827. Level 5, Tower Centre, 45 Queen Street, Auckland T:+64 9 379 5376  
www.jlta.com.nz